

**DEPARTMENT OF THE ARMY TECHNICAL MANUAL**

**ORGANIZATIONAL MAINTENANCE REPAIR PARTS AND**

**SPECIAL TOOLS LIST FOR**

**PURGE AND FILL UNIT, GYRO STABILIZED PLATFORM MX-8474/ASN-86**

Headquarters, Department of the Army, Washington, D. C.  
17 August 1971

TABLE OF CONTENTS

		Paragraph	Page
SECTION I.	INTRODUCTION		
	Scope . . . . .	1-1	1-1
	General . . . . .	1-2	1-1
	Explanation of Columns . . . . .	1-3	1-1
	Special Information . . . . .	1-4	1-2
	How to Locate Repair Parts . . . . .	1-5	1-3
	Abbreviations (Not Applicable) . . . . .	1-6	1-4
	Federal Supply Codes for Manufacturers . . . . .	1-7	1-4
	Recommendations for Maintenance Publication Improvements . . . . .	1-8	1-4
SECTION II.	PRESCRIBED LOAD ALLOWANCE . . . . .		2-1
SECTION III.	REPAIR PARTS FOR ORGANIZATIONAL MAINTENANCE . . . . .		3-1
SECTION IV.	SPECIAL TOOLS, TEST AND SUPPORT EQUIPMENT FOR ORGANIZATIONAL MAINTENANCE (Not Applicable) . . . . .		4-1
SECTION V.	INDICES		
	Federal Stock Number Cross Reference to index Number . . . . .		5-1
	Reference Number Cross-Reference to Figure and Item Number . . . . .		5-2
	Reference Designation Cross Reference to Index Number . . . . .		5-3
	Federal Stock Number Cross-Reference to Figure and Item Number. . . . .		5-4
	Figure and Item Number Cross Reference to Index Number. . . . .		5-5

LIST OF ILLUSTRATIONS

Number	Title	Page
1	Purge and Fill Unit, Gyro Stabilized Platform MX-8474/ASN-86 . . . . .	3-2

ORGANIZATIONAL MAINTENANCE REPAIR PARTS AND SPECIAL TOOLS LIST

SECTION I. INTRODUCTION

1-1. Scope.

This manual lists repair parts and special tools required for the performance of organizational maintenance of the Purge and Fill Unit, Gyro **Stabilized Platform MX-8474/ASN-86**.

1-2. General.

This Repair Parts and Special Tools List is divided into the following sections:

- a. Prescribed Load Allowance (PLA) - Section II. A composite listing of the repair parts, special tools, test and support equipment having quantitative allowances for initial stockage at the **organizational** level.
- b. Repair Parts - Section III. A list of repair parts authorized for the performance of maintenance at the organizational level in index number sequence.
- c. Special Tools, Test and Support Equipment - Section IV. Not applicable.
- d. Indices - Section V. Conversion of numbers and indices is explained as follows:

(1) Index - Federal Stock Number to Index Number. A list of Federal stock numbers, in ascending numerical sequence, cross-referenced to the Repair Parts list index number.

(2) Index - Reference Number to Figure and Item Number. A list of reference numbers (part numbers and manufacturers codes), in ascending alphanumeric sequence, cross-referenced to figure and item number.

(3) Index - Reference Designation to Index Number. A list of Reference Designations (RD), in ascending alphanumeric sequence, cross-referenced to the Repair Parts list index number.

(4) Index - Federal Stock Number to Figure and Item Number. A list of Federal stock numbers, in ascending numerical sequence, cross-referenced to the illustration figure number and item number.

(5) Index - Figure and Item Number to Index Number. A list of figure and item numbers, each in ascending numerical sequence, cross-referenced to the Repair Parts list index numbers.

1-3. Explanation of Columns.

The following provides an explanation of columns in the tabular lists in Sections III and IV.

- a. Source, Maintenance, and Recoverability (SMR) Codes, Column 1:

(1) Source code, indicates the selection status and source for the listed item. Source codes are:

Code	Explanation
G	<b>Applies to major assemblies</b> that are procured with Procurement of Electronic and Missile, Army (PEMA) funds for initial issue only to be used as exchange <b>assemblies at Direct Support Unit (DSU)</b> and General Support Unit ( <b>GSU</b> ) level. These assemblies will not be stocked above DSU and GSU level or returned to depot level
P	Applies to repair parts which are stocked in or supplied from General Support <b>Activity/Direct Support Activity (GSA/DSA)</b> , or Army supply system, and authorized for use at indicated maintenance categories

(2) Maintenance code, indicates the lowest category of maintenance authorized to install the listed item. The maintenance level is:

Code	Explanation
0	Organizational maintenance

(3) Recoverability code, indicates whether unserviceable items should be returned for recovery or salvage. Items not coded are expendable. Recoverability code is:

Code	Explanation
R	Applies to repair parts and assemblies which are economically repairable at DSU and GSU activities and which normally are furnished by supply on an exchange basis

b. The second line of column 1 is a cross-reference to the index number of the repair part as it appears in the Selection Work Sheet.

c. Federal Stock Number, Column 2. This column indicates the Federal stock number assigned to the item and will be used for requisitioning purposes.

d. Description, Column 3. This column indicates the Federal item name of the item required. A part number or other reference number is followed by the applicable five-digit Federal supply code for manufacturers.

e. Unit of Measure (U/M), Column 4. A two-character alphabetic abbreviation indicating the amount or quantity of the item upon which the allowances are based; e. g. , EA (each).

f. Quantity Incorporated in Unit, Column 5. This column indicates the quantity of the item used in any one assembly. An "AR" appearing in this column in lieu of a quantity indicates that a definite quantity cannot be indicated; e.g., shims, spacers, etc.

<sup>g-</sup> 15-Day Organizational Maintenance Allowance, Column 3 of Section II and Column 6 of Section III and IV.

(1) The allowance columns are divided into four subcolumns. Indicated in each subcolumn opposite the first appearance of each item is the total quantity of items authorized for the number of equipments supported. Subsequent appearance of the same item will have the letters "REF" in the allowance columns. Items authorized for use as required but not for initial stockage are identified with an asterisk in the allowance column.

(2) The quantitative allowances for organizational level of maintenance represents one initial prescribed load for a 15-day period for the number of equipments supported. Units and organizations authorized additional prescribed loads will multiply the number of prescribed loads authorized by the quantity of repair parts reflected in the density column applicable to the number of items supported to obtain the total quantity of repair parts authorized.

(3) Organizational units providing maintenance for more than 100 of these equipments shall determine the total quantity of parts required by converting the equipment quantity to a decimal factor by placing a decimal point before the next to last digit of the number to indicate hundredths, and multiplying the decimal factor by the parts quantity authorized in the 51-100 allowance column. Example, authorized allowance for 51-100 equipments is 40; for 150 equipments multiply 40 by 1.50 or 60 parts required.

(4) Subsequent changes to allowances will be limited as follows: No change in the range of items is authorized. If additional items are considered necessary, recommendation should be forwarded to Commanding Officer, U.S. Army Electronics Command, ATTN: AMSEL-ME-NMP-AS, Fort Monmouth, New Jersey 07703 for exception or revision to the allowance list. Revisions to the range of items authorized will be made by the Commanding Officer, U. S. Army Electronics Command, ATTN: AMSEL-ME-NMP-AS, Fort Monmouth, New Jersey 07703 based upon engineering experience, demand data, or TAERS information.

h. Illustration, Column 7. This column indicates the figure number of the illustration in which the item is shown, and the number used to reference the item in the illustration.

i. Reference Designation, Column 8. This column indicates the reference designation symbol of each item in the equipment.

1-4. Special Information.

a. Repair parts mortality has been based on 100 equipments operating 65 hours a month for 1 year.

b. The basis of issue for authorized special tools, test and support equipment is the number of end items of equipment supported and the number of maintenance personnel allocated to perform the required maintenance operations as follows: **TWO** sets of Special Tools and Test Equipment supporting twenty-three AN/ASN-86 Inertial Navigation Sets.

c. The following publications pertain to Purge and Fill Unit, Gyro Stabilized Platform MX-8474/ASN-86 and its components.

TM 11-6625-2444-12	Operator% and Organizational Maintenance Manual for Purge and Fill Unit, Gyro Stabilized Platform MX-8474/ASN-86
TM 11-6625-2444-15	Operator, Organizational, Direct Support, General Support, and Depot Maintenance for Purge and Fill Unit, Gyro Stabilized Platform MX-8474/ASN-86
TM 11-6625-2444-45	General Support and Depot Maintenance Manual for Purge and Fill Unit, Gyro Stabilized Platform MX-8474/ASN-86
TM 11-6625-2444-45P	General Support and Depot Maintenance Repair Parts and Special Tools List for Purge and Fill Unit, Gyro Stabilized Platform MX-8474/ASN-86

1-5. How to Locate Repair Parts.

a. When the Federal stock number or reference number is unknown:

- (1) First. Determine the assembly within which the repair part belongs.
- (2) Second. Using list of illustrations, find the illustration covering the assembly to which the repair part belongs.
- (3) Third. Identify the repair part on the illustration and note the figure and item number of the repair part.
- (4) Fourth. Using the Figure and Item Number Index, locate the sequence index number of the repair part.
- (5) Fifth. Refer to the sequence index number in the Repair Parts list for the Federal stock number or reference number.

b. When the Federal stock number or reference number is known:

- (1) First. Using either of the indices of Federal Stock Numbers, find the Federal stock number. These indices are in ascending numerical sequence by Federal stock number, cross-referenced to either the Repair Parts list index number, or to the illustration figure and item number.
- (2) Second. Using the Index of Reference Numbers, find the applicable number. This index is in ascending alphanumeric sequence by reference number, cross-referenced to the Repair Parts list index number.
- (3) Third. Using the Repair Parts list, find the assembly of the repair part and the illustration figure and item number, or the index number, as referenced in the indices of Federal Stock Numbers or Reference Numbers.

c. When the RD is known:

- (1) First. Using the Reference Designation Index, find the RD. This index is in ascending alphanumeric sequence, cross-referenced to the index number of the Repair Parts list. The next higher assembly of any component may be determined by using the RD Index. Identify the RD of the part in question and, by following the upward progression of this index, the sequence number of the next higher assembly part number may be identified. The RD is compiled as follows:

<u>1</u>	<u>A1</u>	<u>A1</u>	<u>MP1</u>
Unit No.	Assembly Letter and No.	Subassembly Letter and No.	Component Letter and No.

- (2) Second. Using the Repair Parts list, find the assembly of the repair part and the illustration figure and item number.

d. When the Figure and Item Number are known:

- (1) First. Identify the repair part on the applicable figure.
- (2) Second. Cross-reference to the individual indices for information required.

1-6. Abbreviations. Not applicable.

1-7. Federal Supply Codes for Manufacturers.

Code	Manufacturer
06481	Litton Systems, Inc. Guidance and Control Systems Div. 5500 Canoga Ave. Woodland Hills, Calif. 91364
<b>83330</b>	Smith, Herman H., Inc. 812 Snediker Ave. Brooklyn, N. Y. <b>11207</b>
99862	Carr Lane Mfg. Co. 4200 Krause Court St. Louis, Mo. 63119

1-8. Recommendations for Maintenance Publication Improvements.

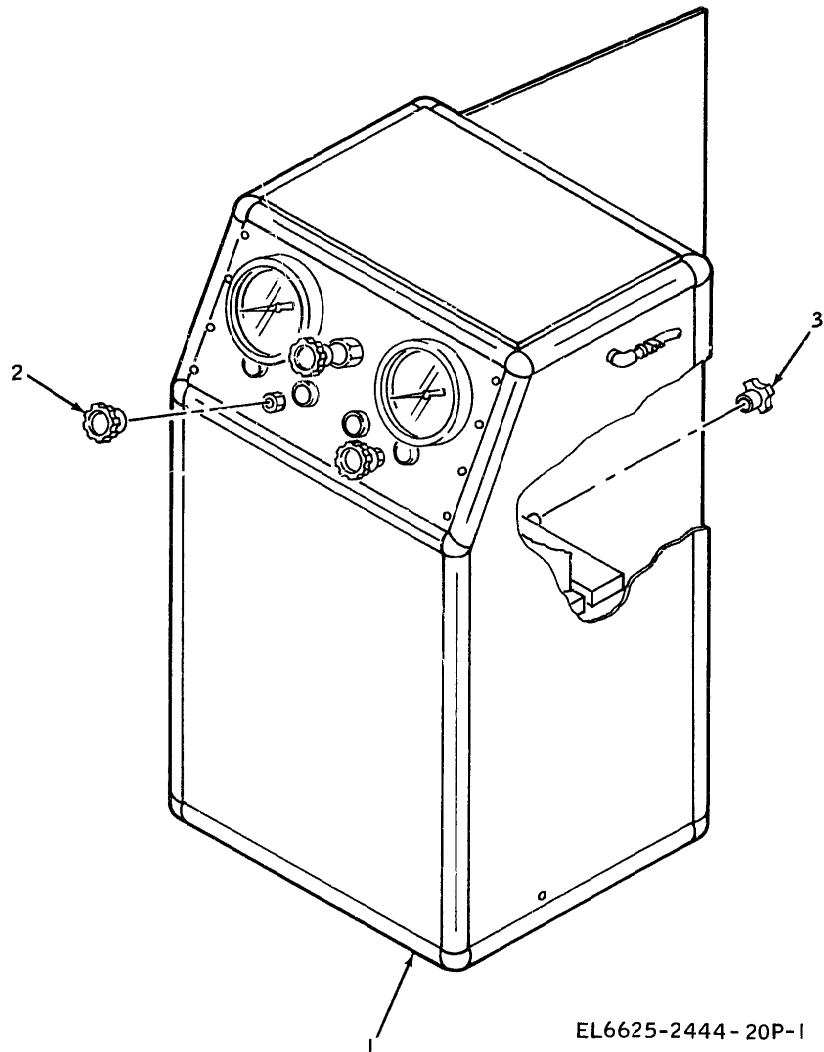
Report of errors, omissions, and recommendations for improving this publication by the individual user is encouraged. Reports should be submitted on DA Form 2026 (Recommended Changes to DA Publications) and forwarded direct to Commanding **General**, U. S. Army Electronics Command, Attn: AMSEL-ME-NMP-AS, Fort Monmouth, New Jersey 07703.

SECTION II. PRESCRIBED LOAD ALLOWANCE

	DESCRIPTION	USABLE ON CODE	15-DAY ORGANIZATIONAL MAINTENANCE ALLOWANCE		
			(a) 1-5	(b) 6-20	(c) 21-50
INDEX NUMBERS ARE INCLUDED TO FACILITATE CROSS-REFERENCING					
5355	KNOB, INSTRUMENT	/INDEX NUMBER A032/	1	1	2
5355-687-2934	KNOB, HAND	/INDEX NUMBER A080/			2

SECTION III. REPAIR PARTS FOR ORGANIZATIONAL MAINTENANCE

(1) SMR CODE	(2) FEDERAL STOCK NUMBER	(3) DESCRIPTION  REFERENCE NUMBER & MFR. CODE	(4) UNIT OF MEAS.	(5) QTY INC IN UNIT	(6) 15-DAY ORGANIZATIONAL MAINTENANCE ALW				(7) ILLUSTRATIONS FIGURE & ITEM NO.	(8) REFERENCE DESIGNATION
					(a) 1-5	(b) 6-20	(c) 21-60	(d) 51-100		
G O R A001	6605-522-3739	PURGE AND FILL UNIT, GYRD PLATFORM MX-8474/ASN-86 310086 (06481)	EA	1					1 - 1	1
P O A032	5355	KNOB, INSTRUMENT 2203A (83330)	EA	3	*	*	*	2	1 - 2	1MP17
P O A080	5355-687-2934	KNOB, HAND CL4HK4 (99862)	EA	1	*	*	*	2	1 - 3	1A2MP3



EL6625-2444 - 20P-1



SECTION IV. SPECIAL TOOLS, TEST & SUPPORT EQUIPMENT FOR ORGANIZATIONAL MAINTENANCE

(1) SMR CODE  INDEX NO.	(2) FEDERAL STOCK NUMBER	(3) DESCRIPTION  REFERENCE NUMBER & MFR. CODE	(4) UNIT OF MEAS.  USABLE OM CODE	(5) QTY INC IN UNIT	(6) 15-DAY ORGANIZATIONAL MAINTENANCE ALW				(7) ILLUSTRATIONS FIGURE & ITEM NO.	(8) REFERENCE DESIGNATION
					(a) 1-5	(b) 6-20	(c) 21-50	(d) 51-100		
<b>(NOT APPLICABLE)</b>										

SECTION V. INDEX-FEDERAL STOCK NUMBER CROSS REFERENCE TO INDEX NUMBER

FEDERAL STOCK NUMBER	INDEX NO.	FEDERAL STOCK NUMBER	INDEX NO.	FEDERAL STOCK NUMBER	INDEX NO.
5355	A032				
5355-687-2934	A080				
6605-522-3739	A001				

SECTION V. INDEX - REFERENCE NUMBER CROSS-REFERENCE TO FIGURE AND ITEM NUMBER

REFERENCE NUMBER	MFG. CODE	FIGURE & ITEM NO.	REFERENCE NUMBER	MFG. CODE	FIGURE & ITEM NO.	REFERENCE NUMBER	MFG. CODE	FIGURE & ITEM NO.
CL4HR4	99862	1 - 3						
2203A	83330	1 - 2						
310086	06481	1 - 1						

SECTION V. INDEX-REFERENCE DESIGNATION CROSS REFERENCE TO INDEX NUMBER

REFERENCE DESIGNATION	INDEX NO.	REFERENCE DESIGNATION	INDEX NO.	REFERENCE DESIGNATION	INDEX NO.
1 IA2MP3 IMO17	A001 A080 A032				

By the Order of the Secretary of the Army:

W. C. WESTMORELAND,  
*General, United States Army,*  
*Chief of Staff.*

Official:

VERNE L. BOWERS,  
*Major General United States Army,*  
*The Adjutant General.*

Distribution:

To be distributed in accordance with DA Form 12-31, Direct and General Support maintenance requirements for OV-1D and U-21 aircrafts.

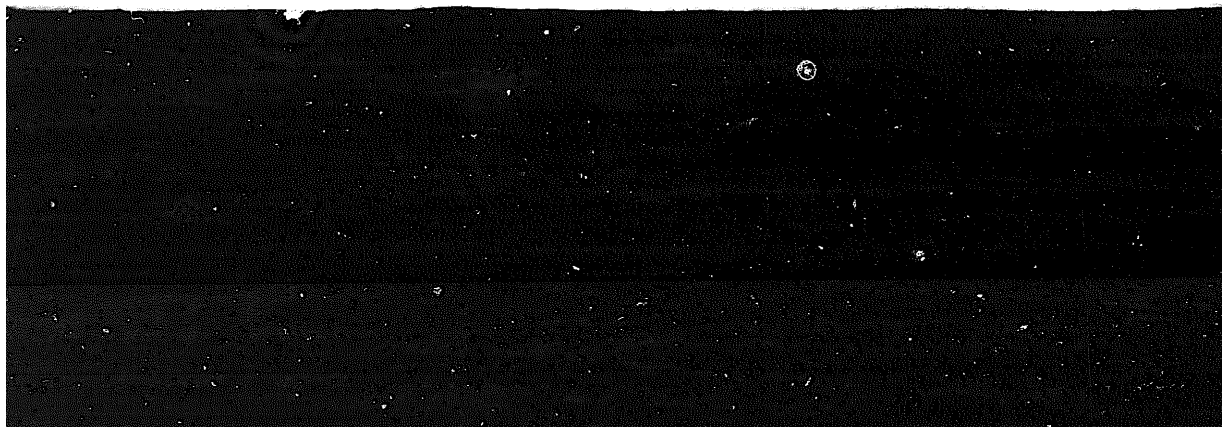
\*U.S. GOVERNMENT PRINTING OFFICE: 1971-769025/171

**END**

**12-25-82**

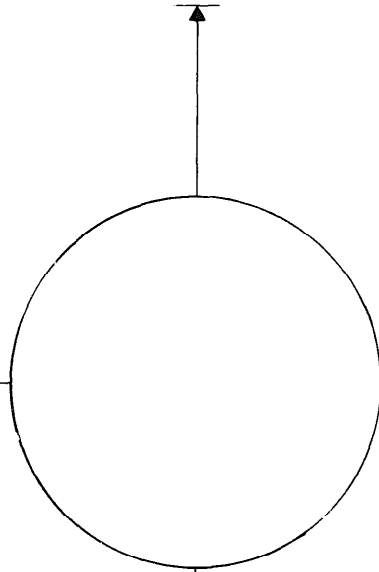
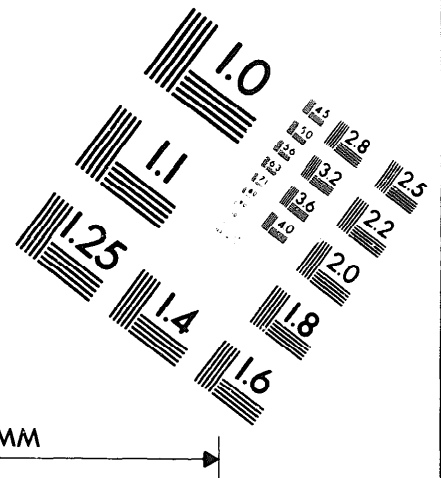
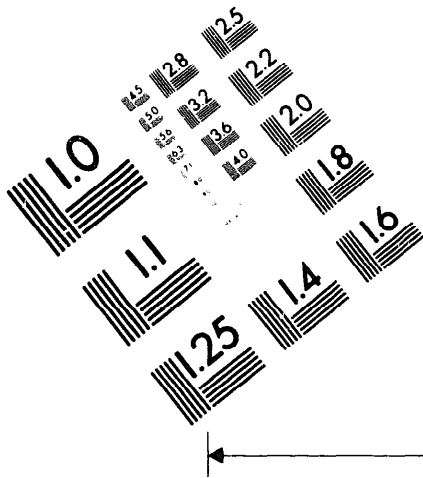
**DATE**





DEPARTMENT OF THE ARMY

MICROFORM  
TEST TARGET



150 MM

1.0 mm (e= 81 mm)

ABCDEFGHIJKLMN OPQRSTUVWXYZ 1234567890  
abcdefghijklmnopqrstu vwxyz \$%& /%# 1/2 1/4 3/4 —=+ x&@\*

1.5 mm (e= 1.09 mm)

ABCDEFGHIJKLMN OPQRSTUVWXYZ 1234567890  
abcdefghijklmnopqrstu vwxyz \$%& /%# 1/2 1/4 3/4 —=+ x&@\*

2.0 mm (e= 1.37 mm)

ABCDEFGHIJKLMN OPQRSTUVWXYZ  
abcdefghijklmnopqrstu vwxyz  
1234567890 \$%& /%# 1/2 1/4 3/4 —=+ x&@\*

2.5 mm (e= 1.77 mm)

ABCDEFGHIJKLMN OPQRSTUVWXYZ  
abcdefghijklmnopqrstu vwxyz  
1234567890 \$%& /%# 1/2 1/4 3/4 —=+ x&@\*

1.0 mm (e= 81 mm)

ABCDEFGHIJKLMN OPQRSTUVWXYZ 1234567890  
abcdefghijklmnopqrstu vwxyz \$%& /%# 1/2 1/4 3/4 —=+ x&@\*

1.5 mm (e= 1.09 mm)

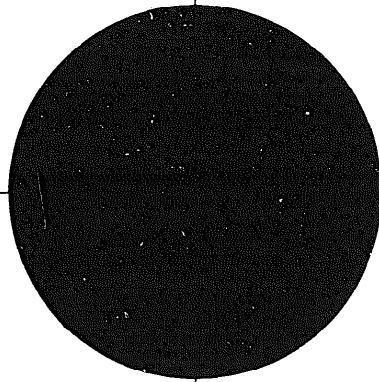
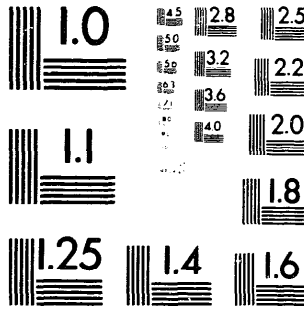
ABCDEFGHIJKLMN OPQRSTUVWXYZ 1234567890  
abcdefghijklmnopqrstu vwxyz \$%& /%# 1/2 1/4 3/4 —=+ x&@\*

2.0 mm (e= 1.37 mm)

ABCDEFGHIJKLMN OPQRSTUVWXYZ  
abcdefghijklmnopqrstu vwxyz  
1234567890 \$%& /%# 1/2 1/4 3/4 —=+ x&@\*

2.5 mm (e= 1.77 mm)

ABCDEFGHIJKLMN OPQRSTUVWXYZ  
abcdefghijklmnopqrstu vwxyz  
1234567890 \$%& /%# 1/2 1/4 3/4 —=+ x&@\*



200 MM

250 MM

